

KIT COMPONENTS



Standard package components

- ES main unit • Battery (BDC70)
- Battery charger (CDC68) • Power Cable
- Lens cap • Lens hood • Tool pouch • Screwdriver
- Lens brush • Adjusting pin x 2 • Cleaning cloth
- Operation manual • USB memory key
- Laser caution sign-board • Carrying case
- Carrying strap

SPECIFICATIONS

Model	ES-101	ES-102	ES-103	ES-105	ES-107
Telescope					
Magnification / Resolving power	30x / 2.5"				
Others	Length: 171mm (6.7in.), Objective aperture: 45mm (1.8in.) (48mm (1.9in.) for EDM), Image: Erect, Field of view: 1°30' (26m/1,000m), Minimum focus: 1.3m (4.3ft.), Reticle illumination: 5 brightness levels				
Angle measurement					
Display resolution	0.5" / 1" (0.0001 / 0.0002gon, 0.002 / 0.005mil)	1" / 5" (0.0002 / 0.001gon, 0.005 / 0.02mil)			
Accuracy (ISO 17123-3:2001)	1"	2"	3"	5"	7"
Dual-axis compensator / Collimation compensation	Dual-axis liquid tilt sensor, working range: ±6' (±111mgon) / Collimation compensation available				
Distance measurement					
Laser output *1	Reflectorless mode: Class 3R / Prism/sheet mode: Class 1				
Measuring range	Reflectorless *5	0.3 to 500m (1.0 to 1,640ft.)			
(under average conditions *9)	Reflective sheet ** *5	RS90N-K: 1.3 to 500m (4.3 to 1,640ft.), RS50N-K: 1.3 to 300m (4.3 to 980ft.), RS10N-K: 1.3 to 100m (4.3 to 320ft.)			
	Mini prisms	1.3 to 500m (1,640ft.)			
	One prism	1.3 to 4,000m (4.3 to 13,120ft.) / Under good conditions *6: 1.3 to 5,000m (16,400ft.)			
	Three prisms	to 5,000m (16,400ft.) / Under good conditions *6: to 6,000m (19,680ft.)			
Display resolution	Fine/Rapid: 0.001m / 0.01ft. / 1/8in. Tracking: 0.01m / 0.1ft. / 1/2in.				
Accuracy *2	Reflectorless *5	(3 + 2ppm x D) mm *7			
(ISO 17123-4:2001)	Reflective sheet **	(3 + 2ppm x D) mm			
(D=measuring distance in mm)	AP/CP prism	(2 + 2ppm x D) mm			
Measuring time *8	Fine: 0.9s (initial 1.7s), Rapid: 0.7s (initial 1.4s), Tracking: 0.3s (initial 1.4s)				
Interface and Data management					
Display / Keyboard	Graphic LCD, 192 x 80 dots, backlight, contrast adjustment / Alphanumeric keyboard / 25 keys with backlight				
Control panel location *9	On both faces				On one face
Trigger key	On right instrument support				
Data storage	Internal memory	Approx. 10,000 points			
	Plug-in memory device	USB flash memory (max. 8GB)			
Interface	Serial RS-232C, USB2.0 (Type A, for USB flash memory)				
Bluetooth modem (Factory Option) *10	Bluetooth Class 1, Ver.2.1+EDR, Operating range: up to 300m (980ft.) *11				
General					
Laser-pointer *12	Coaxial red laser using EDM beam				
Guide light *12	Green LED (524nm) and Red LED (626nm), Operating range: 1.3 to 150m (4.3 to 490ft.) *2				
Levels	Graphic	6'(inner circle)			
	Circular level	10' / 2mm			
Optical plummet	Magnification: 3x, Minimum focus: 0.3m (11.8in.) from tribrach bottom				
Laser plummet (option)	Red laser diode (635nm±10nm), Beam accuracy: ≤ 1.0mm@1.3m, Class 2 laser product				
Dust and water protection	IP66 (IEC 60529:2001)				
Operating temperature *12	-20 to +50oC (-4 to +122oF)				
Size with handle *9	Control panel on both faces: W191 x D181 x H348mm (W7.5 x D7.1 x H13.7in.) Control panel on one face: W191 x D174 x H348mm (W7.5 x D6.9 x H13.7in.)				
Weight with battery & tribrach	Approx. 5.6kg (12.3 lb.)				
Power supply					
Battery	BDC70 detachable battery	Li-ion rechargeable battery			
Operating time (20°C)	BDC70	Approx. 36 hours (single distance measurement every 30 seconds)			
	External battery (option) *14	BT-73Q: approx. 89 hours (single distance measurement every 30 seconds)			

*1 IEC60825-1:Ed.2.0:2007/ FDA CDRH 21 CFR Part 1040.10 and 11
 *2 Average conditions: Slight haze, visibility about 20km (12 miles), sunny periods, weak scintillation.
 *3 With Kodak Gray Card White Side (90% reflective). When brightness on measured surface is 30,000 lx or less.
 Reflectorless range/accuracy may vary according to measuring objects, observation situations and environmental conditions.
 *4 When the measuring beam's incidence angle is within 30° in relation to the reflective sheet target.
 *5 Measuring range in temperatures of -30 to -20°C (-22 to -4°F) with Low Temperature models and 50 to 60°C (122 to 140°F) with High Temperature models: RS90N-K: 1.3 to 300m (4.3 to 980ft.), RS50N-K: 1.3 to 180m (4.3 to 590ft.), RS10N-K: 1.3 to 60m (4.3 to 190ft.)
 *6 Good conditions: No haze, visibility about 40km (25 miles), overcast, no scintillation.
 *7 Measuring range: 0.3 to 200m
 *8 Typical, under good conditions. Reflectorless measurement time may vary according to measuring objects, observation situations and environmental conditions.
 *9 Control panel location may vary depending on region or model.
 *10 Usage approval of Bluetooth wireless technology varies according to country. Please consult your local office or representative in advance.
 *11 No obstacles, few vehicles or sources of radio emissions/interference in the near vicinity of the instrument, no rain.
 *12 The laser-pointer and the guide light do not work simultaneously.
 Low Temperature models: -30 to 50 °C (-22 to 122 °F) and High Temperature models: -20 to 60 °C (-4 to 140 °F, No direct sunlight) are available on built-to-order basis.
 *13 models: -20 to 60 °C (-4 to 140 °F, No direct sunlight) are available on built-to-order basis.
 *14 For ES-101, ES-102 and Low Temperature models.



TOPCON CORPORATION

75-1 Hasunuma-cho, Itabashi-ku, Tokyo 174-8580, Japan
 Phone: (+81)3-3558-2527/2521 Fax: (+81)3-3960-4214

<Contact to>

Topcon Singapore Positioning Sales Pte Ltd
 60 Alexandra Terrace,
 #08-27 The Comtech, Singapore 118502
 Phone: (+65)6778-3456 Fax: (+65)6773-6550
 Email: svy.regional@topcon.com.sg
 Web: www.topcon.com.sg

Specifications subject to change without notice.

Bluetooth® word mark and logos are registered trademarks owned by Bluetooth SIG, Inc. and any use of such marks by Topcon is under license. Other trademarks and trade names are those of their respective owners.

Your local Authorized Topcon dealer is:



ES
Easy Station

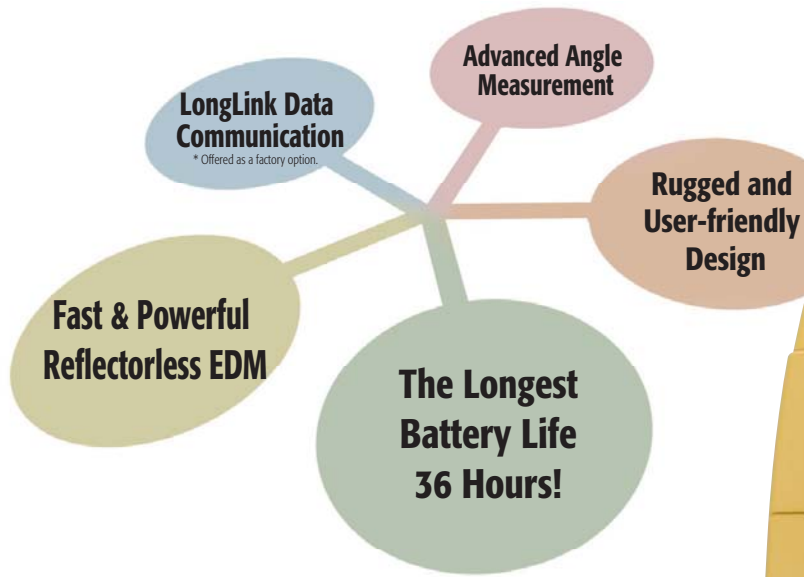


A New Classic

- Fast & Powerful Reflectorless EDM
- LongLink Data Communication*
- Advanced Angle Accuracy
- The Longest Battery Life – 36 Hours!
- Rugged and User-friendly Design

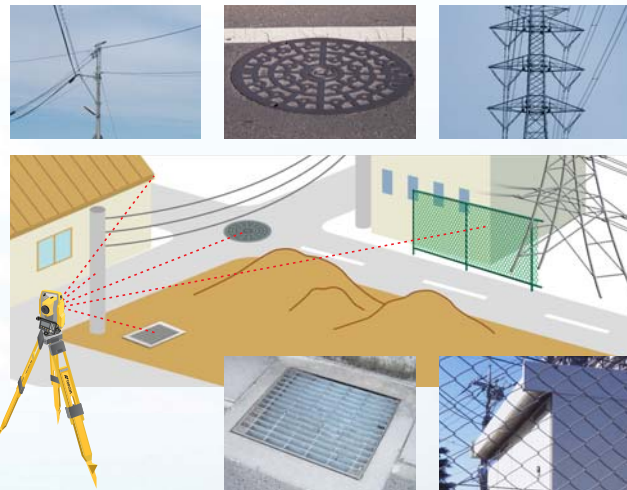
*Factory Option

The perfect combination of easy operation and powerful features.



Fast and Powerful Reflectorless EDM

- Fast and accurate pinpointing with phase shift technology.
- Fast distance measurement of 0.9s regardless of object.
- Minimum reflectorless measuring distance – just 30cm.
- Improved collimation with super-bright pointer.
- Smaller EDM beam spot size for minimal distance measuring error.
- Dependable measuring even at shallow incidence angles.
- Ensures accurate reflective sheet distance measurement.



The ultra-narrow EDM beam can precisely measure walls, corners, manholes on the surface, even chain-link fences and tree branches.



LongLink Data Communication*

- Long-distance communications with *Bluetooth*® Class 1.
- *Bluetooth* Class1 realizes long-distance and stable connection
- Link between total station and rover-end data collector, both equipped with Bluetooth Class1, facilitates quick surveying only by sighting the object.

* Offered as a factory option.



Advanced Angle Measurement System

- ES features advanced absolute encoders for long-term reliability in all work conditions. Dual-axis compensation ensures accurate leveling even on rough terrain.
- Motion clamp and tangent screw ensure stable angle measurement.
- ES-101 and ES-102 feature angle measuring accuracy of 1" equipped with groundbreaking technology for extremely reliable angle measurement.

The Longest Battery Life – 36 Hours!

- Just one battery last 36 hours. It runs one week in full charge and no longer requires extra batteries.

*As of December, 2011.



7 hours in 5 days for fine single measurement in 30 seconds

Rugged and User-friendly Design

- IP66 dustproof/waterproof performance
- Standard usage temperature range -20° to +50°C. Low temperature models can be used as low as -30°* and High temperature Models up to +60°C.*

* Low and High temperature models available as options.

- USB Type A port for convenient added memory. Use of included USB accessory assures IP66 protection.
- Star key [★] instantly brings up functions.
- Trigger key lets you take a series of measurements without taking your eye off the telescope.
- Control panel consists of 10-key pad with LCD for easy viewing of graphics*.

*Control panel location may vary depending on region or model.



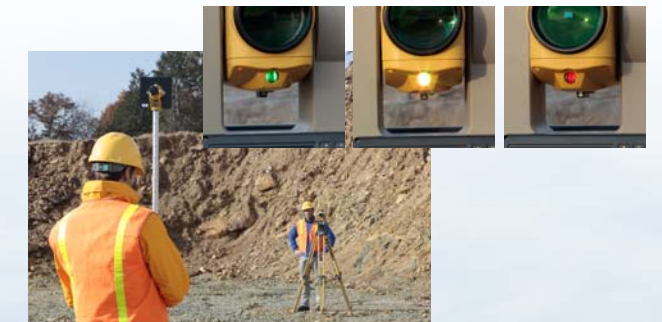
USB Type A port

New control panel

Trigger key

- Green/red Guide Light is built into the telescope as a standard feature, enhancing setting-out work efficiency in a range of 1.3 to 150m.
- Trigger key is ergonomically placed so that measurement can be taken at any time with just the push of a button.
- Built-in laser plummet is equipped for quick instrument setting. 5 brightness levels are ready for optimum visibility.*

*Offered as an option in some areas.



1 Week Operations!

